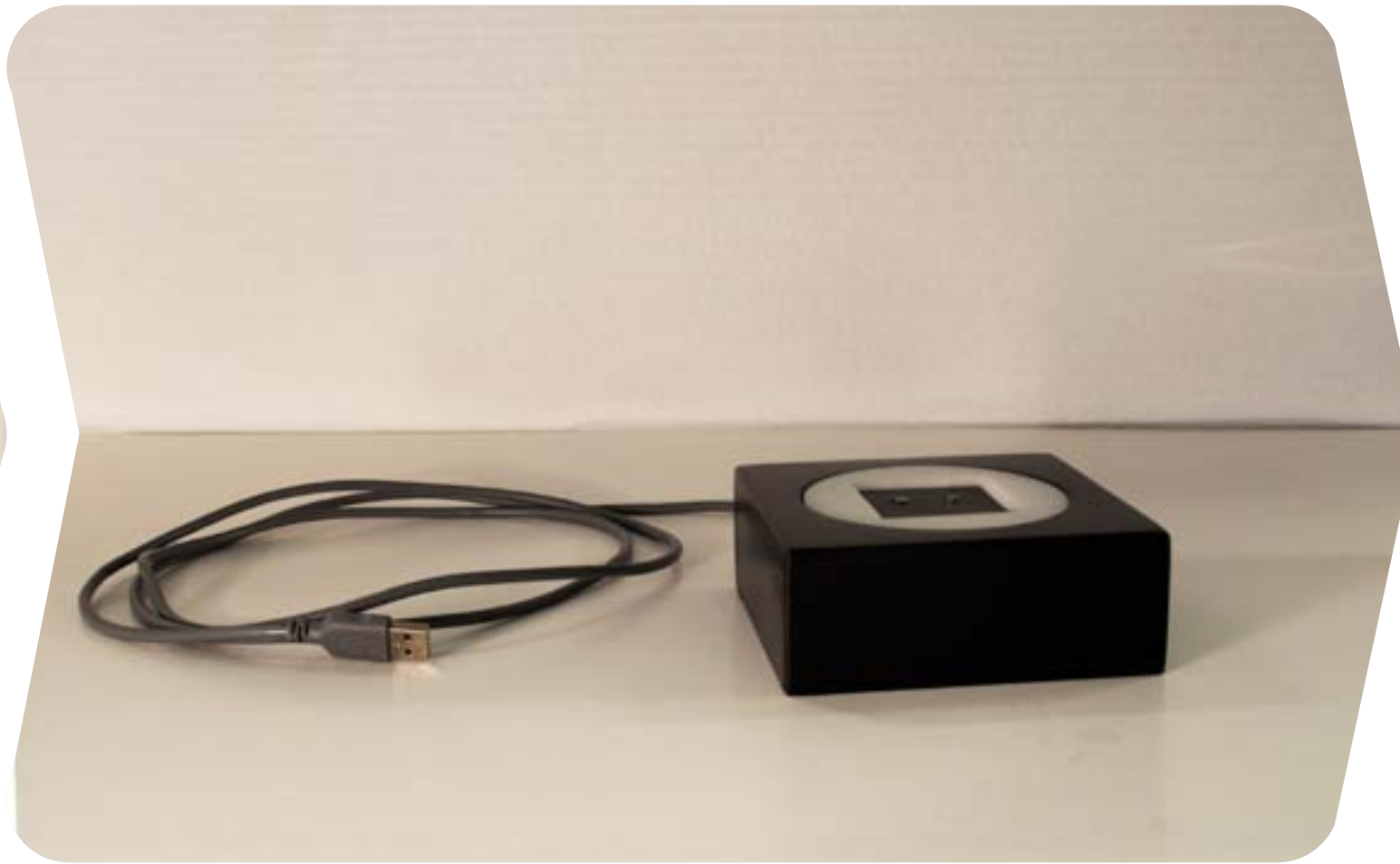


## STORYBOARD



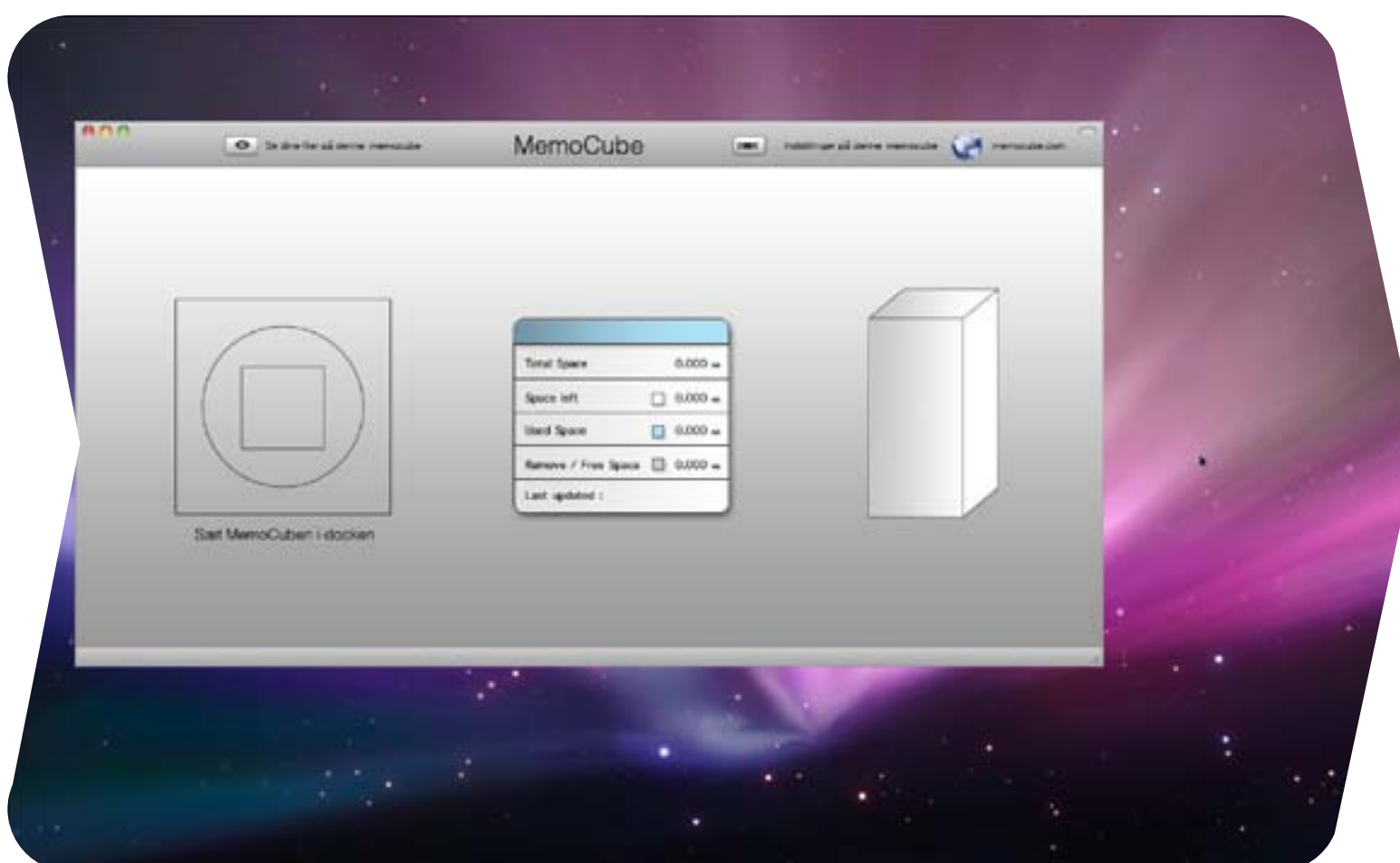
Memo Cubes



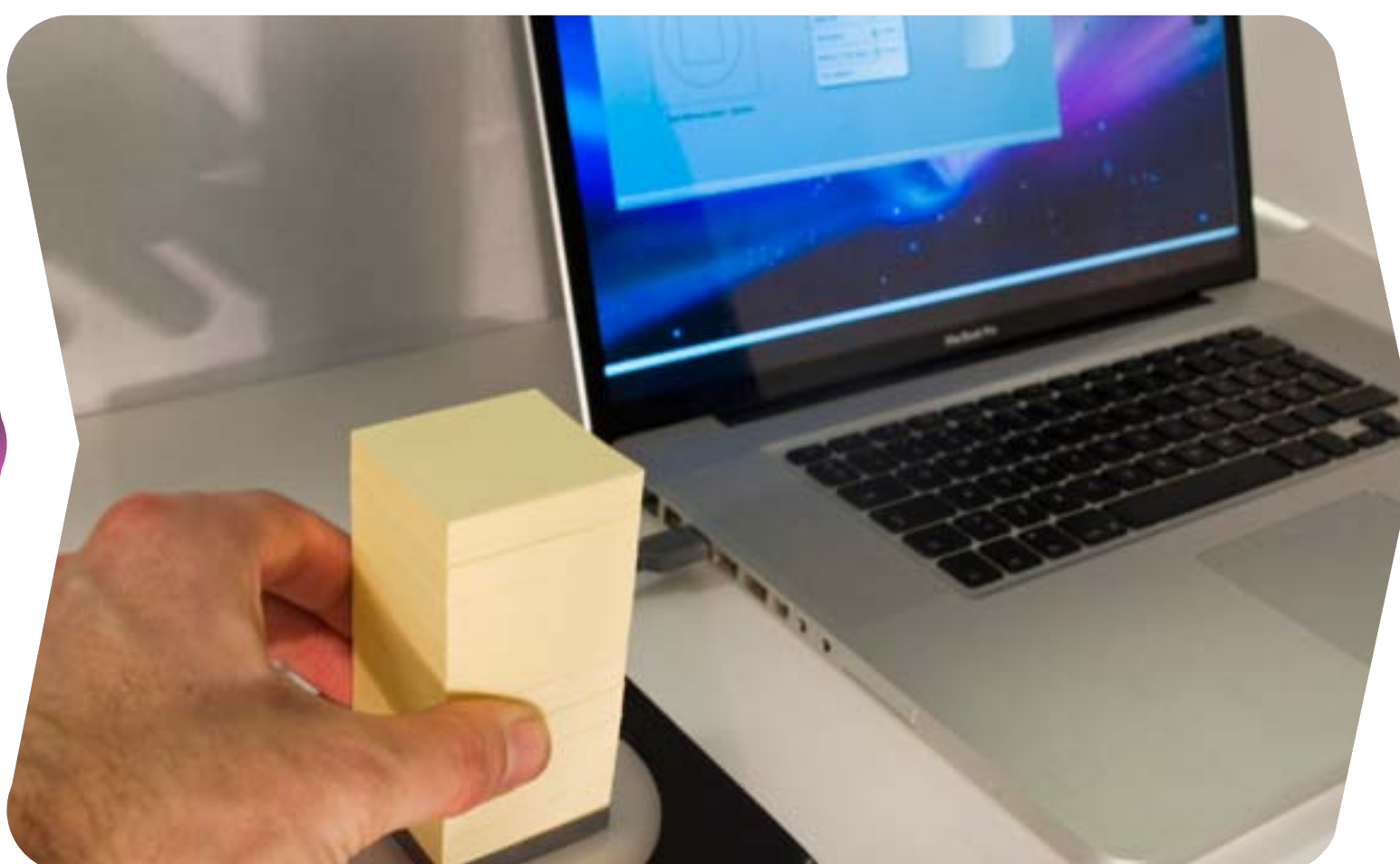
Memo Cube docking station



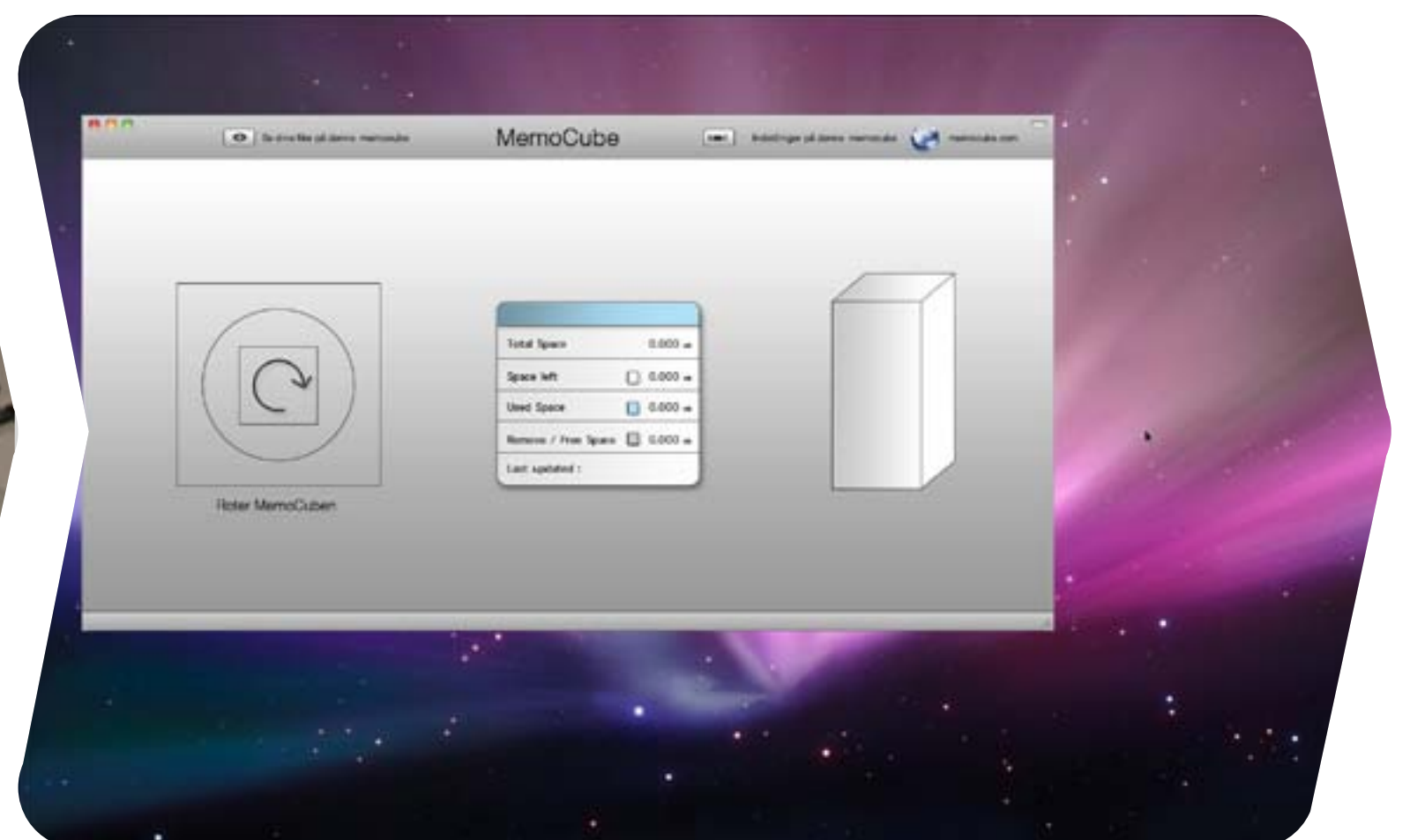
Tilslut docken til computeren eller brug evt. wifi



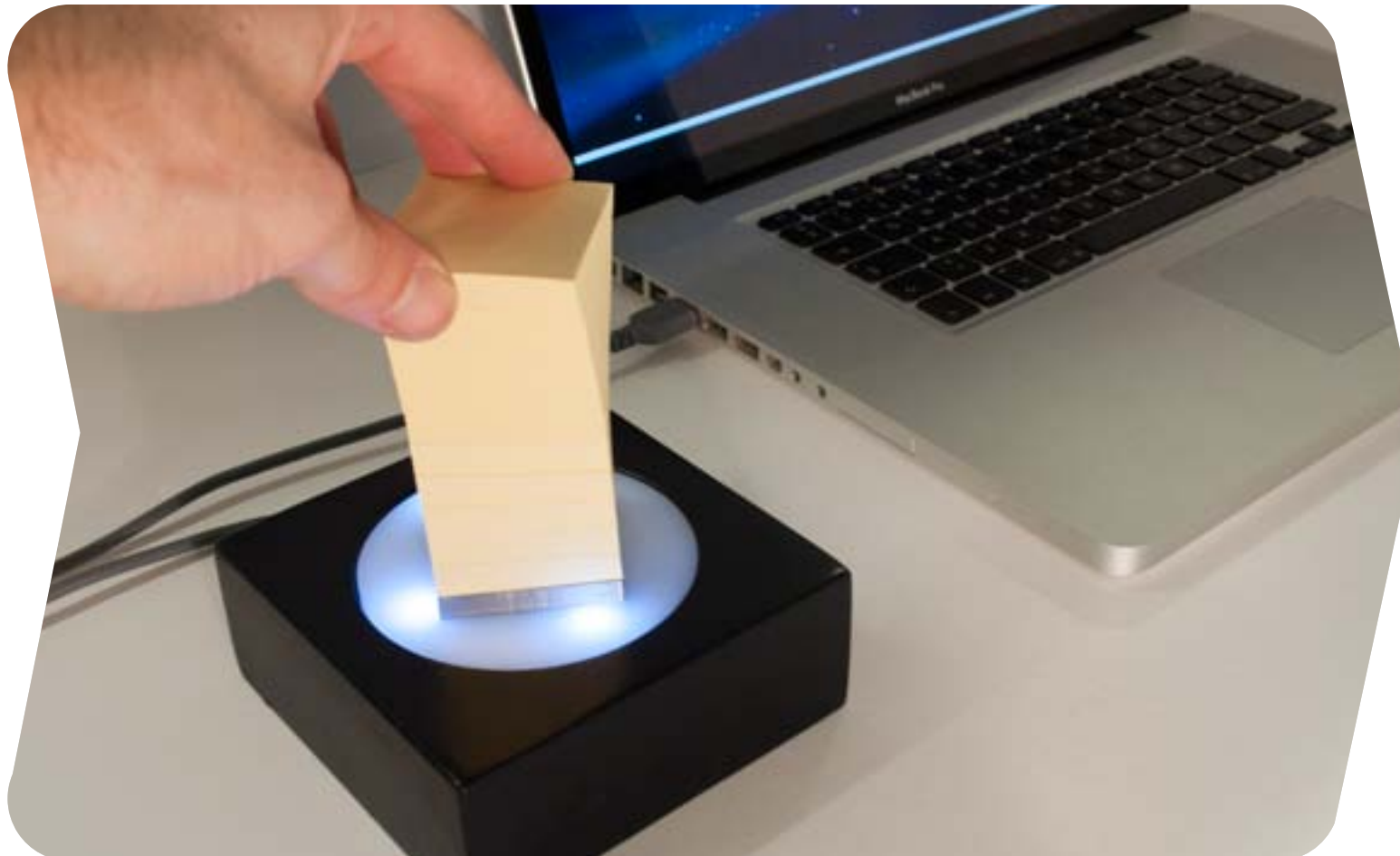
Memo Cube programmet åbner



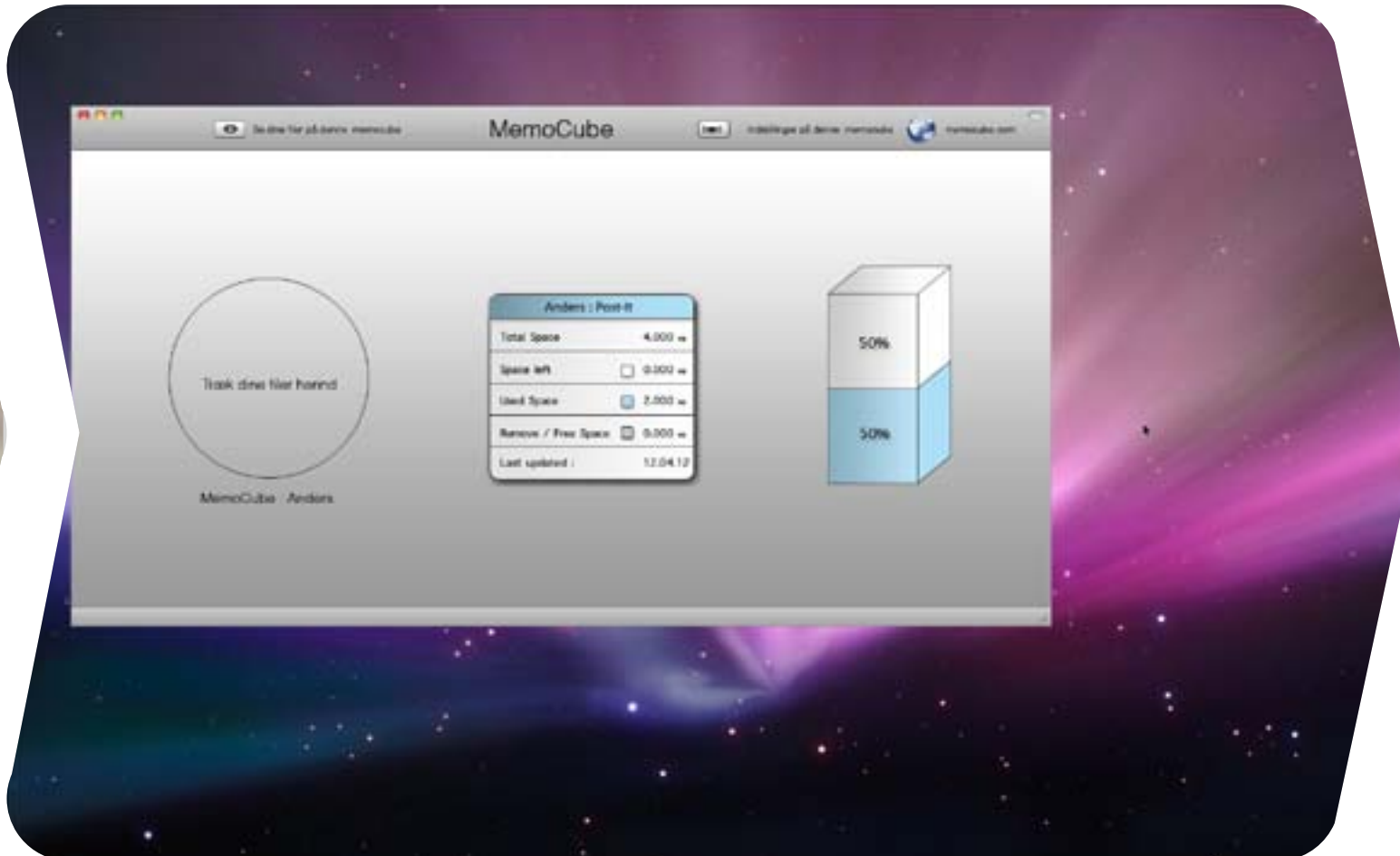
Memo cube placeres i docken



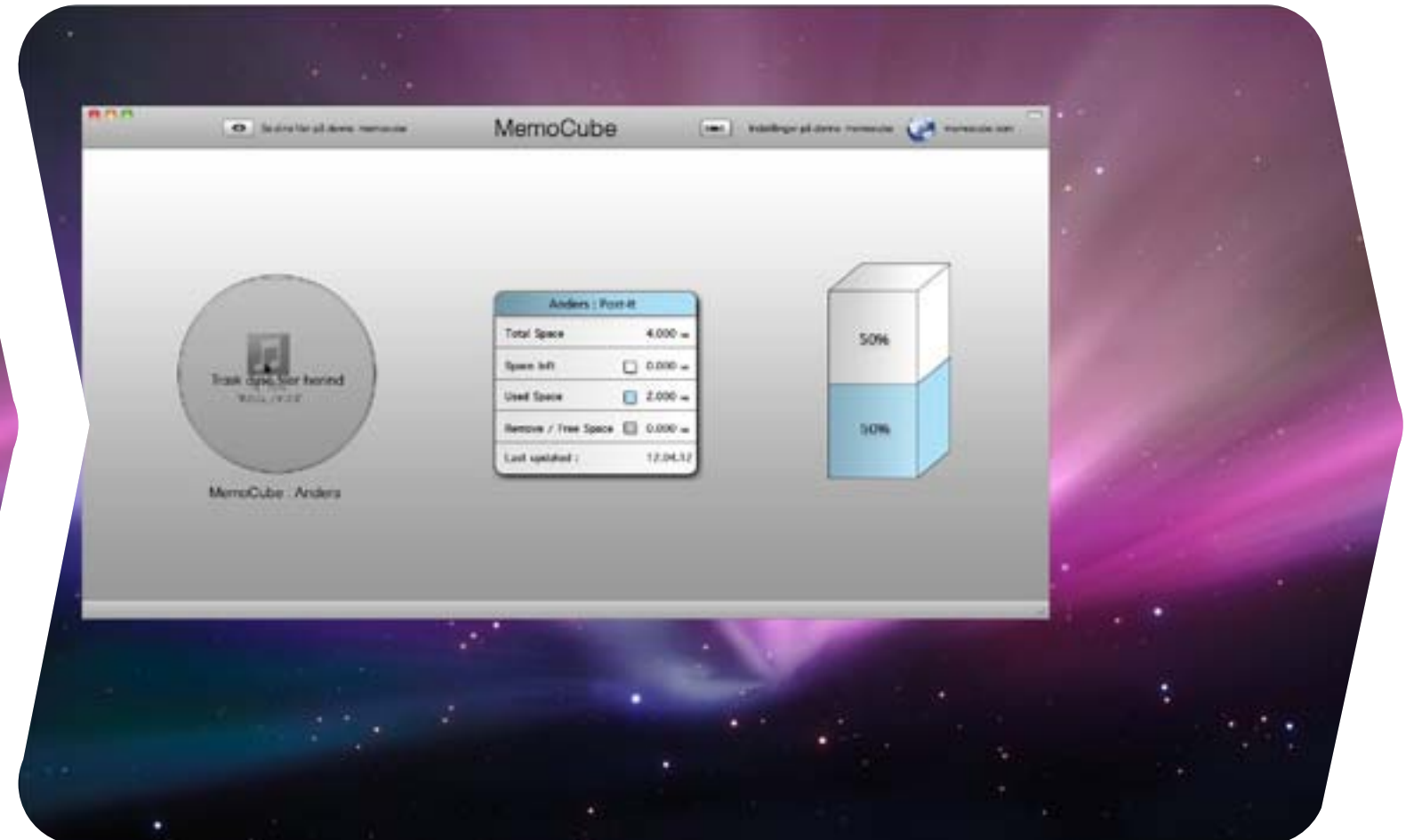
Programmet registrerer klodsen og beder om at rotere den for at låse op



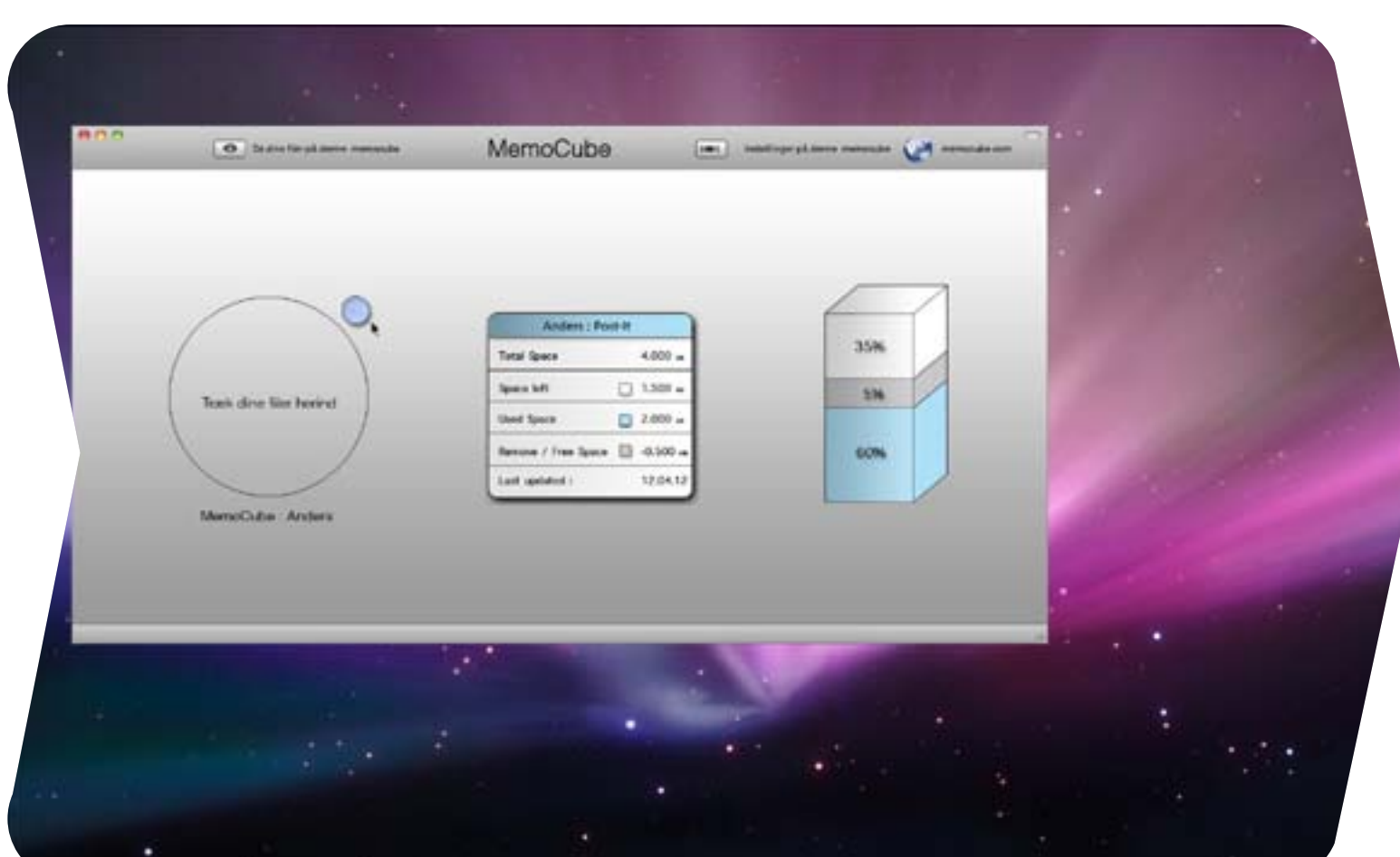
Memo Cube klodsen roteres



Klodsen bliver vejat og dens specifikationer vises



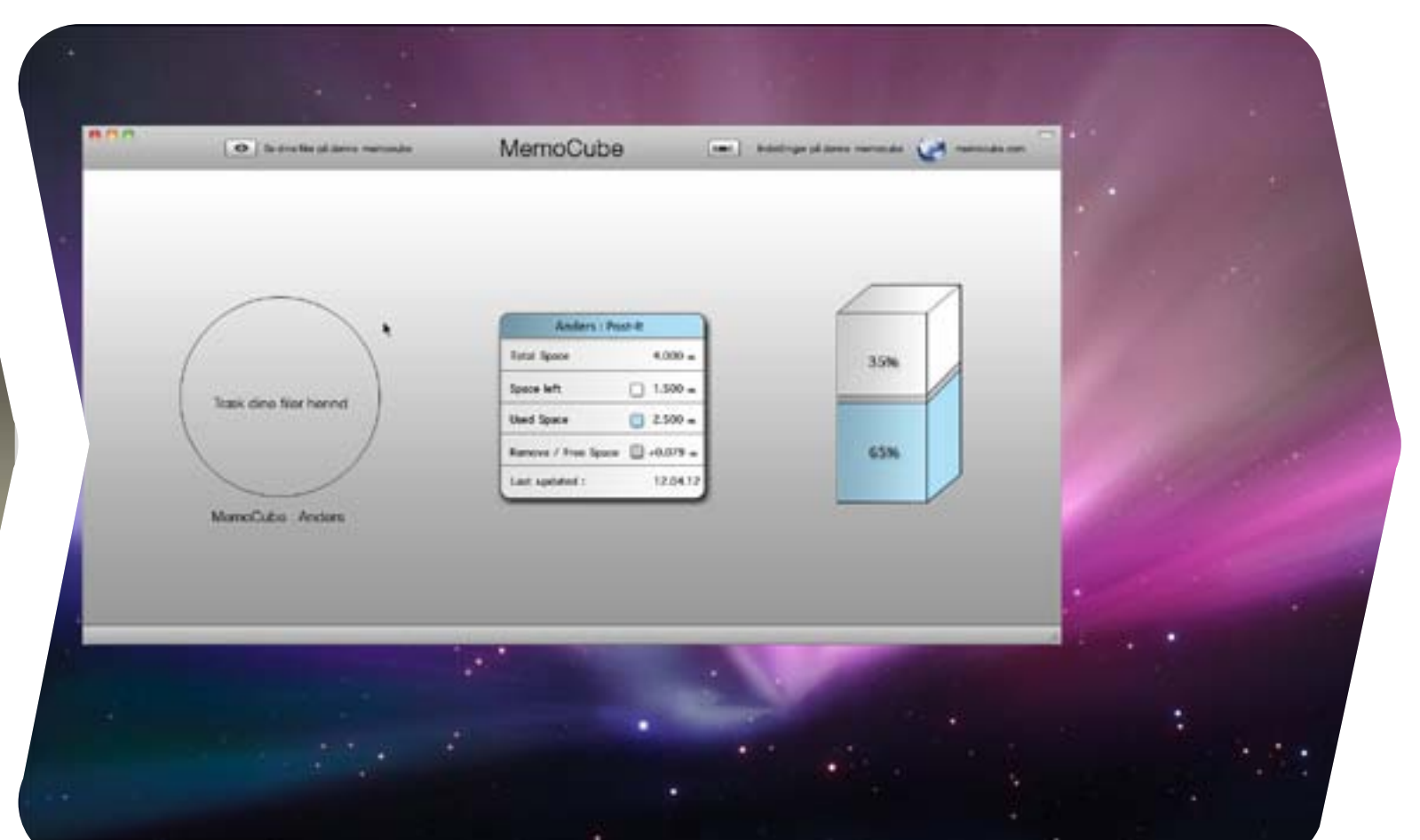
Filer dragges ind, men er ikke gemt endnu



Antallet af filer vises og hvor meget materiale der skal tages af klodsen før at filerne bliver gemt



Materialet fjernes



Programmet registrerer den nye vægt og om der er fjernet nok eller om der er mere til overs til næste fil overførsel

